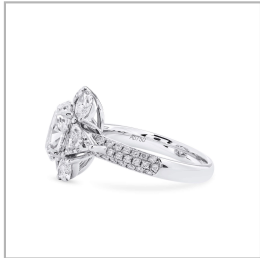
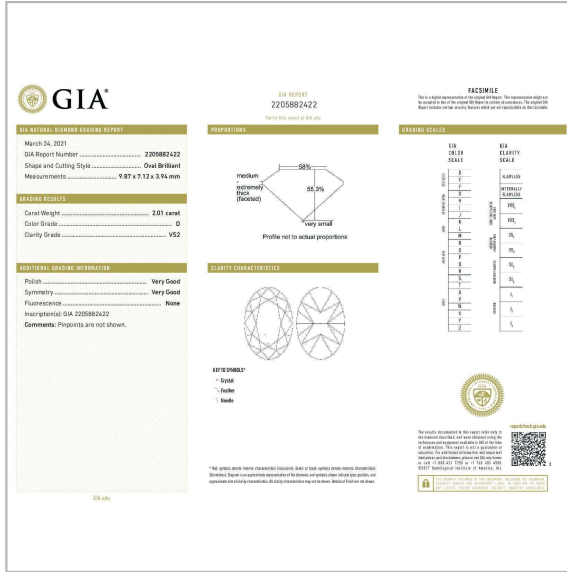


White Diamond Ring, 2.01 Ct. (3.68 Ct. TW), Oval shape, GIA Certified, 2205882422



Product Details

Display color	D
Shape	Oval
Weight (main stone)	2.0100
Side Stones Weight (ct.)	1.6700
Center Quantity	1
Clarity	VS2

Gold Weight (g)	5.54
Gold Type	18K White
Certificate	GIA
Certificate	# 2205882422

Verify online Certificate