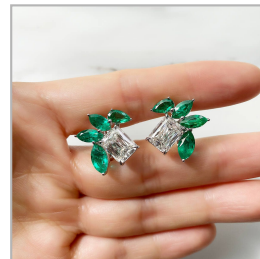


# White Diamond Earrings, 6.03 Ct. (10.09 Ct. TW), Cushion shape, GIA Certified, JCEW05505622



## Product Details

Display color	H
Shape	Cushion
Weight (main stone)	6.0300
Side Stones Weight (ct.)	4.0600
Center Quantity	2
Clarity	SI1

Gold Weight (g)	6.08
Gold Type	18K White
Certificate	GIA
Certificate	# JCEW05505622

Verify online Certificate