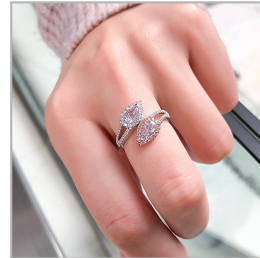
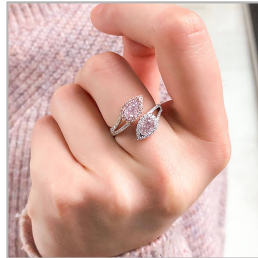


# Very Light Pink Diamond Ring, 1.01 Ct. (1.43 Ct. TW), Pear shape, GIA Certified, JCRF05489090



## Product Details

Display color	Very Light Pink
Shape	Pear
Weight (main stone)	1.0100
Side Stones Weight (ct.)	0.4200
Center Quantity	2
Clarity	SI

Gold Weight (g)	3.62
Certificate	GIA
Certificate	# JCRF05489090

[Verify online Certificate](#)