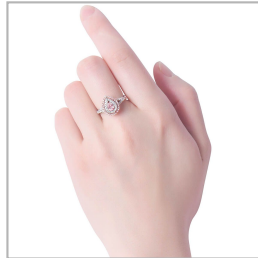
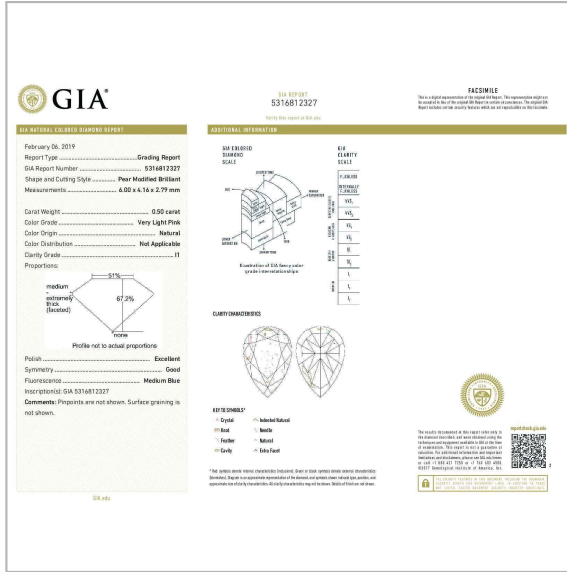


Very Light Pink Diamond Ring, 0.50 Ct. (1.01 Ct. TW), Pear shape, GIA Certified, 5316812327



Product Details

Display color	Very Light Pink
Shape	Pear
Weight (main stone)	0.5000
Side Stones Weight (ct.)	0.5100
Center Quantity	1
Clarity	I1

Gold Weight (g)	4.31
Certificate	GIA
Certificate	# 5316812327

Verify online Certificate