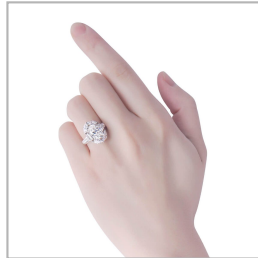
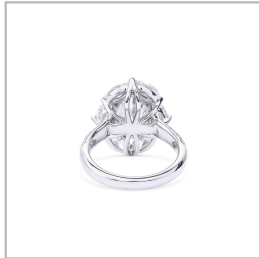
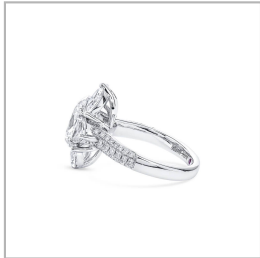


White Diamond Ring, 3.01 Ct. (5.15 Ct. TW), Oval shape, GIA Certified, 1146810358



Product Details

Display color	G
Shape	Oval
Weight (main stone)	3.0100
Side Stones Weight (ct.)	2.1400
Center Quantity	1
Clarity	WVS1

Gold Weight (g)	0.00
Certificate	GIA
Certificate	# 1146810358

Verify online Certificate